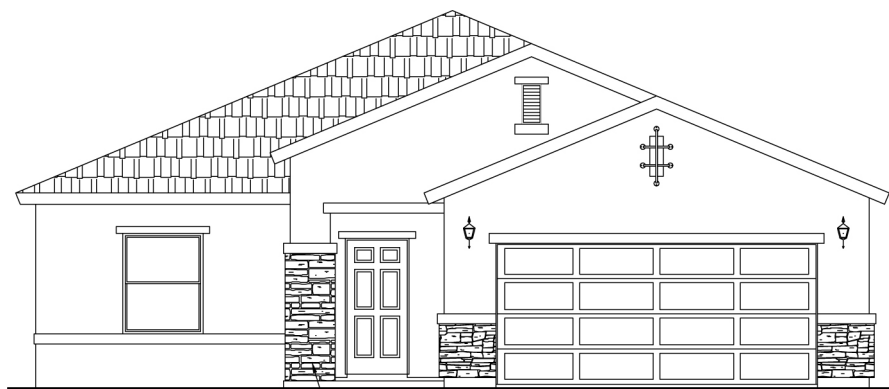


The Sumac

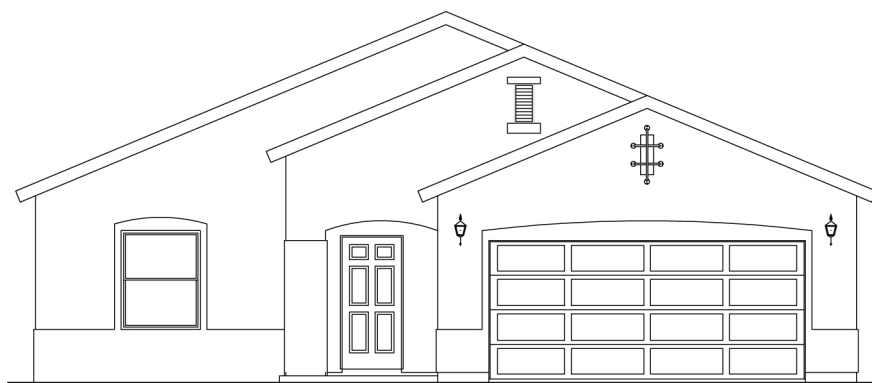
1,969 Square Feet

3 Bedrooms • 2 Baths • Optional Powder Room

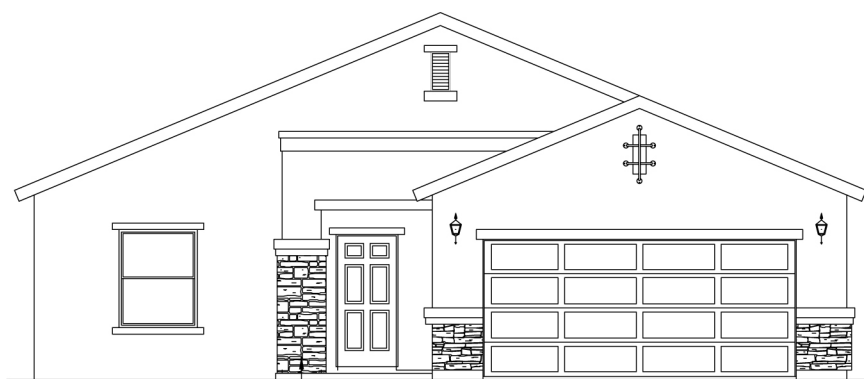


1969A

OPTIONAL STONE



1969B



1969C

OPTIONAL STONE



7910 Gateway East, Suite 102, El Paso, TX 79915 • P: 915-591-6319 • F: 915-591-5451

DesertViewHomes.com

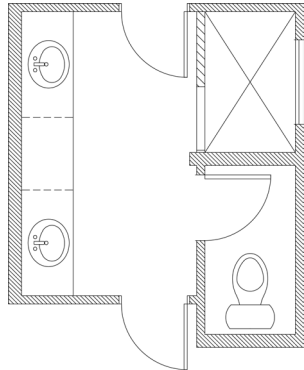
The best move you'll ever make.



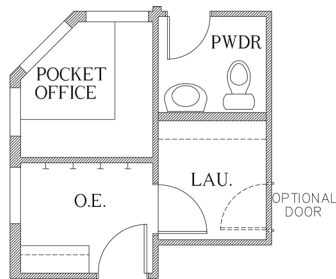
The Sumac

1,969 Square Feet

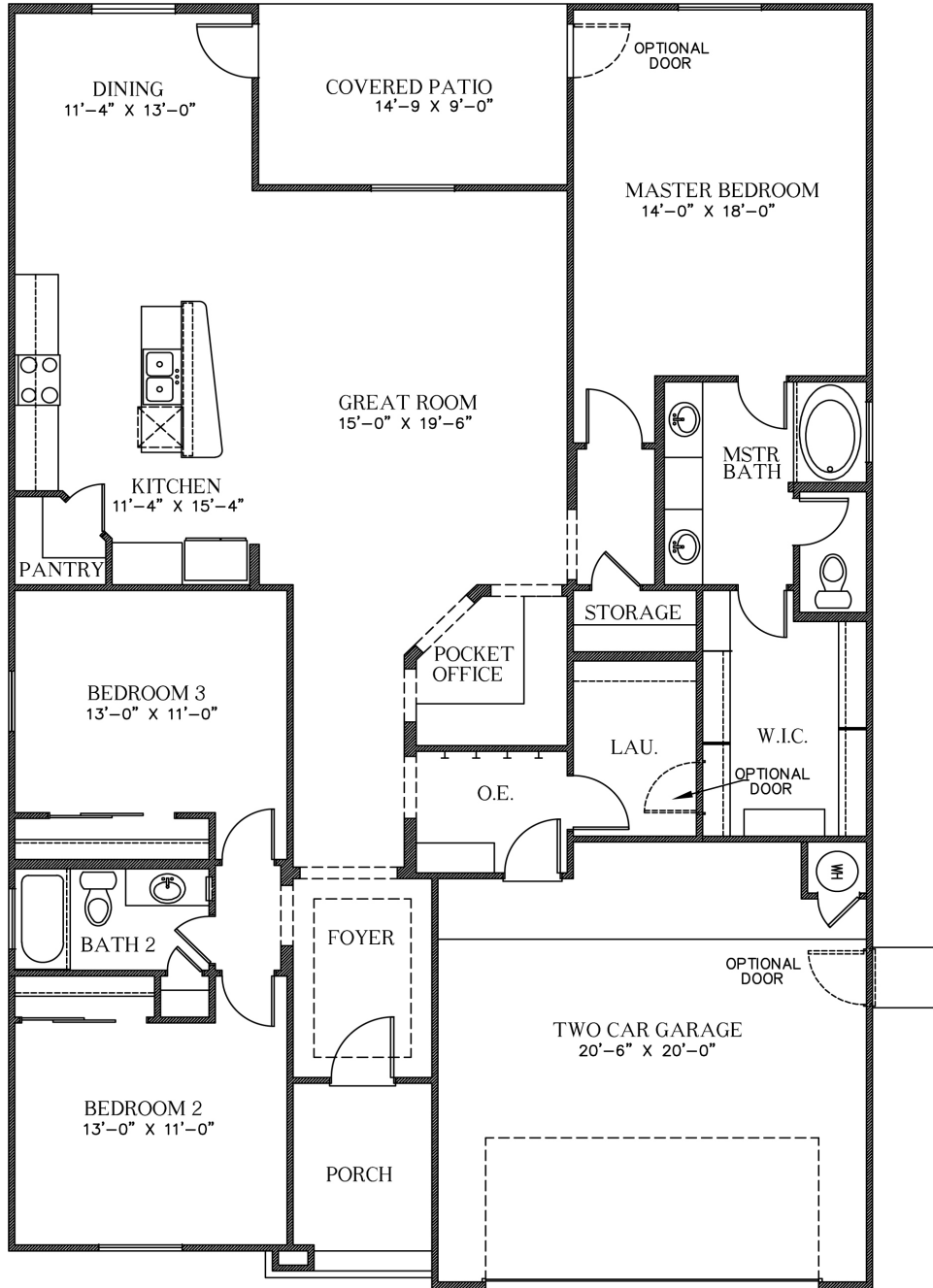
2 Bedrooms • 2 Baths • Optional Powder Room



OPT. MASTER BATH



OPTIONAL PWDR RM



1969 FLOOR PLAN



*Please Note: the enclosed materials are reproduced from artist's renderings. All measurements shown are approximate. Location, size, and existence of doors, windows, walls, fireplaces, showers, and any other items depicted may vary depending on exterior preference or choice of options. Prices, plans, benefits, and locations are subject to change without notice. **Floor plans, features, options/upgrades, and benefits vary by community. See the Sales Specialist for more details.**

DesertViewHomes.com

The best move you'll ever make.

